



# Welcome to Fox Primary School 2015-2016





# General information

- **Non selective community primary school**
- **1 ½ form entry with 330 pupils**
- **2 parallel classes from Rec- Yr 6**
- **Multi cultural intake – 23 languages spoken**
- **Very creative – Arts Mark Gold  
(choir/orchestra/art/drama)**
- **High sport profile – TT, judo, Full time PE teacher**
- **Academically very high attaining**



# Successes at Fox

- **An outstanding school – Ofsted 2009 and 2011**
- **Outstanding teaching and learning leading to outstanding Standards from FS to KS 2**
- **Lead school running teacher training for other schools across London.**
- **Green Flag status – Eco committee, solar panels, LED lighting and (bees).**
- **Fox Pot**
- **Very successful secondary transfer programme**
- **Specialist teachers – PE, art, music ,dance, judo, table tennis and gardening.**
- **24 after school clubs.**
- **Fox run after school play service**
- **Wholesome home cooked school meals- Lidgate butchers**
- **Links with community and use of local area – FSA, Kensington Palace, RCM (Primary Proms),etc**



# Outstanding Ofsted 2009 and 2011

- Fox is an outstanding school with considerable capacity for sustained improvement. Its exceptional qualities are marked by its high standards, the excellent progress pupils make and their abundant successes in personal development.'
- Teaching consistently challenges pupils to think for themselves and to draw their own conclusions
- Teachers are highly imaginative in their use of resources and create lessons which pupils find exciting and intriguing.
- 'The school embodies for me what education is about: mixing children from all backgrounds and providing all of them with the best support so that at the end of the day there is no perceivable difference between children,' - Parent



## Year 6 2014 SATs results

✓ Reading	100 % L4,	95% L5	and	3% L6
✓ Writing	98 % L4	86% L5	and	19% L6
✓ SPAG	98% L4	98% L5	and	31% L6
✓ Maths	100% L4,	98% L5	and	64% L6

## Year 6 2015 SATs results

✓ Reading	98% L4	93% L5	and	7% L6
✓ Writing	98 % L4	93% L5	and	12% L6
✓ SPAG	98% L4	98% L5	and	57% L6
✓ Maths	98 % L4	98% L5	and	64% L6



# Secondary Transfer 2015

Holland Park Academy	26
Aldridge Academy	1
Nottinghill /Ealing	2
Collett Court	4
Dulwich College	1
City of London	1
Chelsea Academy	1
Latymer	3
Oratory	1
Cardinal Vaughan	2
UCL	1

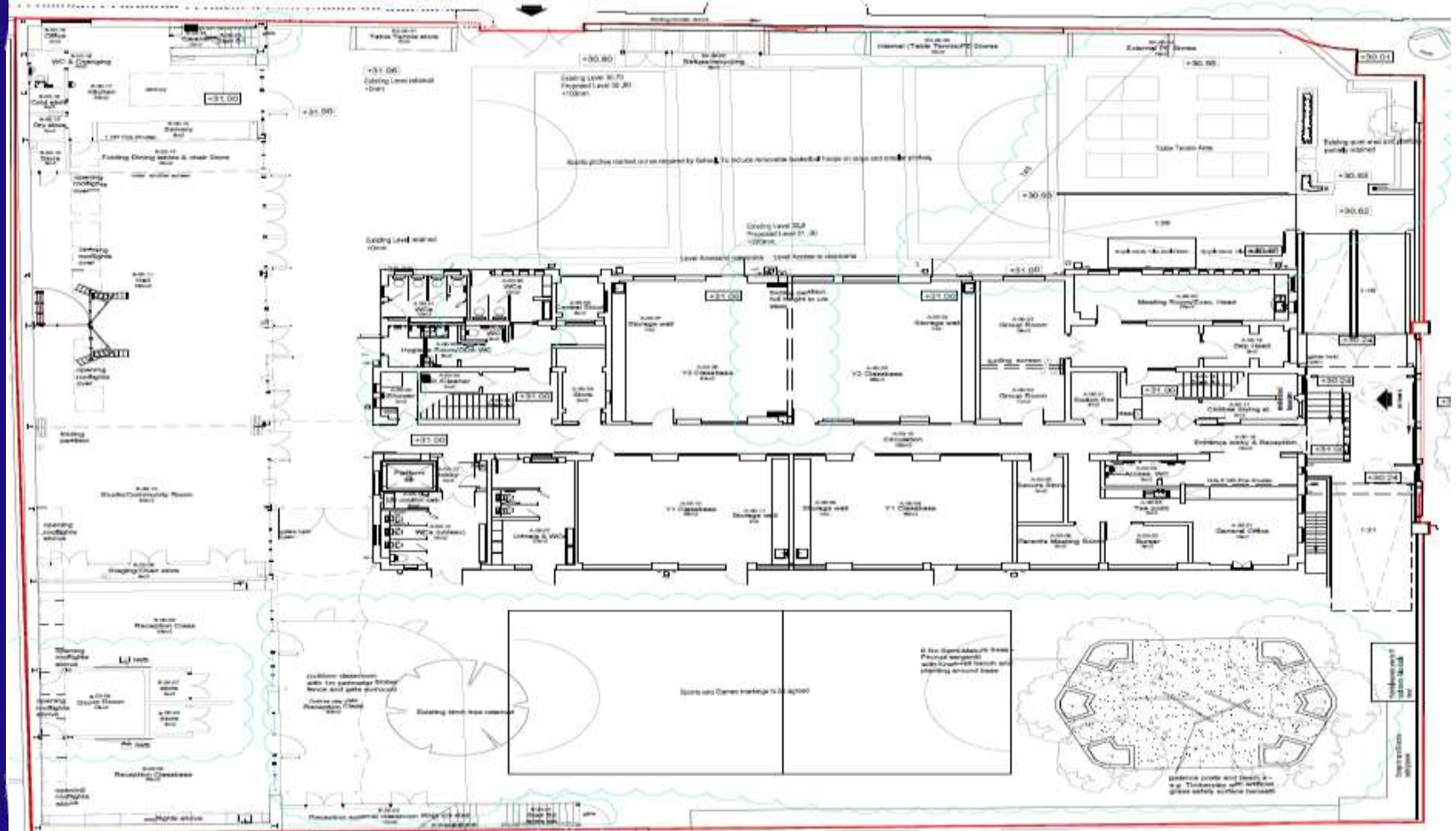


## Things you need to know

- Actively discourage parents to take their children out to move to the independent sector in Year 2 and Year 3 and will not support references.
- Reception 2016 – Reception class size 30 and 30 thereafter.
- Federated with Ashburnham Community School.
- Cannot take holidays in term time – including weddings etc.
- Building project – may not be completed by Autumn 2016
- Your child will gain a rounded education at Fox – we value the arts, music and sport and will not hot house children!



# Ground Floor – new building







# School web site

- <http://www.fox.rbkc.sch.uk/fox-extension/>



# Admissions consultation

- A proposal has been prepared by the Admissions department in consultation with Fox Governing Body to change the admissions at Fox.
- The proposed method for admissions is random allocation. RBKC proposes: to move to random allocation within a revised priority area maintaining the current north boundary but stopping at High St Kensington to the south. Outside of this priority area will be determined on distance. The same method will be used for in year admissions.
- It is also proposed that priority be maintained for siblings.
- The consultation process for the 2017 year of entry will open from 1st October 2015 and must end by 15th January 2016. Any changes agreed will apply to the September 2017 intake. Available on school web site under admissions:

<http://www.fox.rbkc.sch.uk/admissions/>





- Q How many places do you offer?
- A For September 2016 it will be 60 places.
  
- Q Is your admissions Criteria for 2017 going to change?
- A An amended admission criteria has gone out for consultation. If agreed, this will take effect for September 2017 admissions.
  
- Q How does the Admissions Team measure the distance?
- A They have sophisticated software that uses a straight line measurement from the centre of the residence to the centre of Fox School.
  
- Q What was the furthest distance offered last year?
- A The furthest distance offered for Reception September 15 was 0.0585 of a mile.
  
- Q How many siblings are there usually?
- A September 15 was 21 siblings, September 14 was 22 siblings. The highest number was in September 2011 which was 30 siblings
  
- Q I am making an In Year application, will I get a place?
- A This would depend if we have vacancies and where you are on the waiting list.
  
- Q How can I find out where my child is on the waiting list?
- A You will need to contact the Admissions Team.



# Admissions for 2016

**For information on how and when to apply see hints and tips website:**

**[www.rbbkc.gov.uk/children-and-education/schools/join-schools/admissions.....](http://www.rbbkc.gov.uk/children-and-education/schools/join-schools/admissions)**

